

LSE

THE LONDON SCHOOL
OF ECONOMICS AND
POLITICAL SCIENCE ■

Summer
School
2020 ■



World Class City World Class Courses World Class Experience

Summer
School
2020 ■

Session One

22 June – 10 July 2020

Session Two

13 July - 31 July 2020

Session Three

3 August - 21 August 2020

Please note that these dates are provisional and subject to change.
Visit lse.ac.uk/summerschool and join our mailing list for updates.



***“Summer School
courses will give you
an insight into leading
edge thinking in each
discipline, and invite
you to reflect on the big
issues of the day.”***

Professor Christopher Pissarides
2010 Nobel Laureate in Economics



32 Lincoln's Inn Field opened in January 2013 as the new home of the LSE's flagship Department of Economics. This development is part of an ongoing commitment to investing in the LSE's unique central London campus.



London's top University

As ranked by the Complete University Guide 2019

Get ready for Summer School

The LSE's Summer School is the most well-established and the largest of its kind in the whole of Europe, with over 115 academically rigorous courses on offer.



The Programme's aim is to challenge and inspire you through engagement with its world-class LSE faculty, whilst introducing you to new life-long friends from all over the world.

We invite you to experience all that LSE has to offer, including; top flight teaching, modern academic facilities; London's most centrally located student accommodation; and the cultural highlights that are unique to this iconic capital city.

Enhance your education with the LSE this summer; a world-class institution for the social sciences.

1989

100
enrolments across
10
courses

2019

8,700
enrolments across
116
courses

LSE was founded in

1895

and has grown to become one of the foremost social science universities in the world.



18

**NOBEL PRIZE
WINNERS**

AND

36

**WORLD
LEADERS**

past and present

have taught or
studied at LSE



Juan Manuel Santos

Winner of the Nobel Prize for Peace and former President of Colombia, studied MSc Economics at LSE.



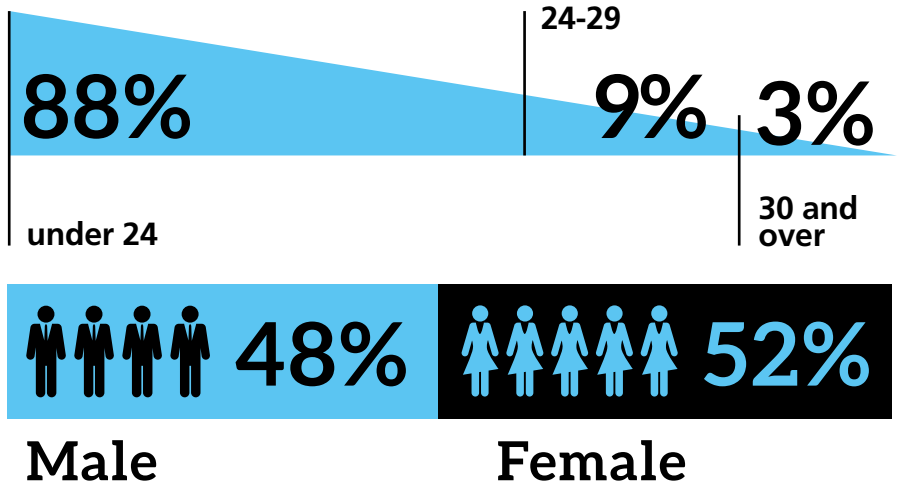
“For me LSE Summer School is a once in a lifetime opportunity. I chose this program because it’s such a well renowned University, as well as a great opportunity for me to meet fellow international students.”

Jessica Lee
University of Minnesota, USA

LL105: International Law: Contemporary Issues

Our Students

Average age
of students



10%
Postgraduates

85%
Undergraduates



5%
Professionals, e.g.

Government departments
National banks
European Commission
The Bank of England
Bank of Italy



155

How many full time
LSE academics teach on
Summer School



29%

Percentage of students
who attend two sessions
or more

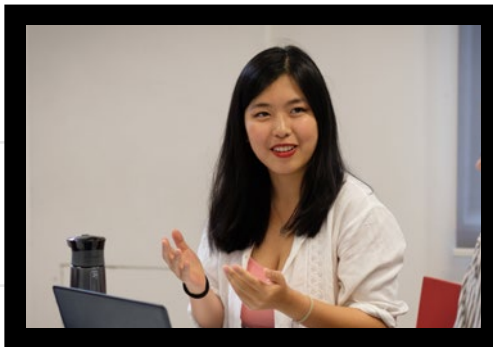
Top 30 worldwide universities attending in 2019 (by enrolment)

- | | |
|--|---|
| 1. The University of Sydney, Australia | 16. University College London, UK |
| 2. The University of Melbourne, Australia | 17. University of Texas at Austin, USA |
| 3. Yale University, USA | 18. Central University of Finance and Economics, China |
| 4. Northeastern University, USA | 19. King's College London, UK |
| 5. University of Queensland, Australia | 20. Georgetown University, USA |
| 6. University of Michigan, USA | 21. University of California, Berkeley, USA |
| 7. University of North Carolina, USA | 22. Università Commerciale Luigi Bocconi, Italy |
| 8. Catholic University of Milan, Italy | 23. University of Copenhagen, Denmark |
| 9. University of Hong Kong, China | 24. South China University of Technology, China |
| 10. University of Nottingham, Ningbo, China | 25. Deakin University, Australia |
| 11. Copenhagen Business School, Denmark | 26. Monash University, Australia |
| 12. Instituto Tecnológico Autónomo de México, Mexico | 27. Bucknell University, USA |
| 13. Libera Università Internazionale degli Studi Sociali (LUISS), Italy | 28. Princeton University, USA |
| 14. University of Virginia, USA | 29. Indiana University Bloomington, USA |
| 15. Vanderbilt University, USA | 30. Villanova University, USA |

Professional skills programme

Enhance your future prospects with our range of careers and professional skills workshops.

Our professional skills programme will help you develop the knowledge, skills and confidence you need to enter the world of work. We have teamed up with LSE departments and external training providers to bring you workshops that provide a wealth of information, from practical confidence-building measures to help you succeed in interviews, to learning how to create a quality CV and knowing exactly what recruiters are looking for.





“The app development workshop was a great introduction to the fundamentals of app design, giving different insights and lots of great (and free!) material for participants.”

Kai Zhang,
University of Copenhagen, Denmark

FM202: Analysis and Management of Financial Risk



Well-being workshops

Interview tips

Coding and app development workshop

Entrepreneurship panel discussions

CV and cover letter sessions

Study skills drop-ins

Presentation skills

Mindfulness

“The Introduction to Coding workshop introduced me to the languages of HTML and CSS, but more importantly it sparked a newfound interest within me.”

Suramay Nagar,
University of New South Wales, Australia

FM350: Advanced Corporate Finance



Social Programme

Our social programme will help you to get to know your fellow Summer School students, whilst building new networks and life-long friendships.

Welcome reception with faculty

Leaving party

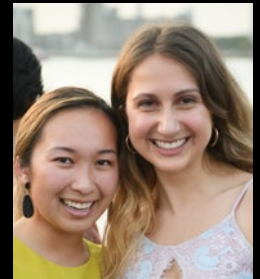
Warner Brother's Studio Tour, The Making of Harry Potter

West End theatre trips

Trips to Oxford, Cambridge, Stonehenge and Bath

Thames River Boat Party

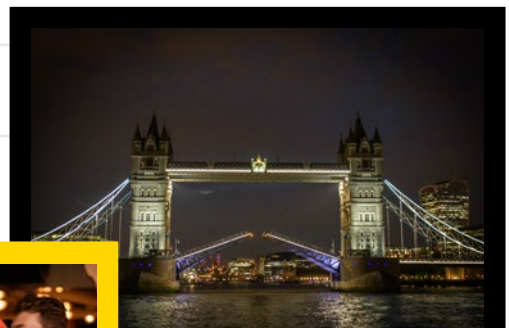
Summer School Lecture Series



#Boatparty



#LeavingPartyS2



#Boatparty #TowerBridge



#Boatparty



#LeavingPartyS1



@chloeshilin
#MakingofHarryPotter



#LeavingPartyS2



#Boatparty



#Boatparty #RiverThames



@m.j.sutton #BuckinghamPalace





116 nationalities represented

2019 student enrolment data





"I met great professors who are doing amazing research in their fields. Being able to talk to them outside of lectures about their research was very beneficial for me."

Name: Aarsal Zaheer
Country Of Origin: USA

A TRULY INTERNATIONAL PROGRAMME



"LSE Summer School was the perfect chance to taste what I could do for my masters degree."

Name: Miriam Koske
Country Of Origin: Kenya



"I've enjoyed meeting lots of new people. Everyone is very open-minded, and it's been easy to make friends with people from all over the world."

Name: Saint Roger Bountsebe Eboueme
Country Of Origin: Cameroon

"There are people from so many different backgrounds at the LSE Summer School, and the environment is very inclusive."



Name: Yutong Zhong
Country Of Origin: China

THAT OPENS
UP YOUR
WORLD

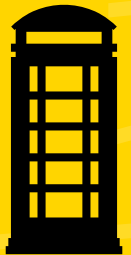


"I chose LSE Summer School because the courses are the same as those that they teach in the undergraduate degrees."

Name: Miguel Benítez-Humanes
Country Of Origin: Spain

London Life

**Your opportunity
to live in the heart
of London.**



You will have access to some of London's most centrally located student accommodation. Prices start from £51 per night including breakfast. Many rooms are within walking distance of the campus.



**@choccakelover
#NaturalHistoryMuseum**



**@augienicholas96
#StPancrasStation**





Rayyan Misherghi

University of California, Berkeley

*MG103: Consumer Behaviour: Behavioural
Fundamentals for Marketing and Management*

**“LSE is so central, you will
literally be immersed in
London culture.”**

**As one of the world’s
great cities, London has a
lot to offer, and as an LSE
Summer School student
you will be well situated
to experience the best of
its cultural highlights.**



@nicholastyoung #School



@laurapeeters2



**@MrLewisWhite
#BoroughMarket**

Free attractions

London is home to some of the best museums and galleries in the world – many of which are free.

Beautiful green spaces

The capital is home to eight beautiful Royal Parks and hundreds of public squares, including London's largest, Lincoln's Inn Field situated right by the LSE.



@nngmusic #LondonEye



Marble Arch



The British Museum



Oxford Street



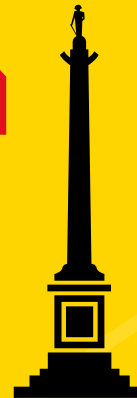
Soho



Piccadilly Circus



Covent Garden



Trafalgar Square



London Eye



@nicolasagardoy
#Chinatown



Buckingham Palace

St James's Park



Houses of Parliament



Westminster Abbey



@isabeltischberger
#KensingtonPalaceGardens





A sense of history

London's rich history is easily explored from the LSE campus, with many areas of historic significance within walking distance.



St Paul's Cathedral



The City

Iconic skyline

London's famous skyline continues to evolve, the most recent addition being the striking Shard building.

River Thames



Tate Modern



The Shard



Tower of London

There's always something new

It doesn't matter how many times you visit, you've never seen it all in London. From a pop-up burger joint in East London to a blockbuster exhibition at one of London's galleries.



Imperial War Museum



8,700 enrolments across Summer School 2019

2019 Summer School data





***"I chose the Summer School
because LSE is one of the greatest
universities in the world and it
offers the best selection of courses."***

Ivan Podkopalov

Lomonosov Moscow State University, Russia

LL206: International Financial Law

Academic Information

Our summer schedule

Over 115 courses are available; all of which are taught and examined to LSE's rigorous academic standards.



of our students
attend 2 or
more sessions

The LSE has remodelled its academic year to improve students' teaching and learning experience. Summer School can now offer students a broader choice of dates and courses across three sessions. Some of our most popular courses now run more than once to give students more flexibility.

Session One

22 June – 10 July 2020

Session Two

13 July - 31 July 2020

Session Three

3 August - 21 August 2020

Please note that these dates are provisional and subject to change.
Visit lse.ac.uk/summerschool and join our mailing list for updates.

Which course is right for you?



100 level courses

No specific prerequisites in their own subject, but may require some mathematics or other related subjects. The minimum requirement for taking these courses is to have an offer of a place at university, but additional evidence of academic ability may also be required.



200 level courses

Equivalent to intermediate level university courses. They have prerequisites in the form of university level introductory courses in the same, or a closely related subject.



300 level courses

Are advanced and equivalent to either final year undergraduate or first year graduate courses. They have prerequisites of university level intermediate courses.

Is English your second language?

Applicants are expected to be proficient in the use of English.

Those who have had previous university level instruction in English, or live in a country where English is a main language, need not submit a proficiency certificate.

Alternatively you will need;

- Minimum TOEFL score of 263 (computer-based test), or 107 (Internet test)
- IELTS 7.0 or their equivalent (e.g. the Cambridge Advanced or CPE Certificate)

Course facts



Academic Director

Entry requirements

Grades: Minimum GPA 3.3/ B+

Prerequisites: 200 and 300 level courses will have conditions of entry. Please check online for details.

Fees: Check online for latest fees at lse.ac.uk/summerschool

Study hours

Duration: Three weeks (Students can study for up to nine weeks if they attend three sessions).

Faculty contact time: A minimum of 54 hours; Lectures: 36 hours; Classes: 18 hours. (Some course schedules vary)

Recommended self-study: 2-3 hours per day

Credit and assessment



Credit: Generally our courses receive three or four credits in the US system, or 7.5 ECTS in the European system. Please check with your home institution.

Assessment: Two written exams, or a final exam and assessed work.*

Course equivalence: Each course is broadly equivalent to one semester from an undergraduate degree.

* Whilst examinations are not compulsory, they are encouraged and may be necessary for students requiring credit.



Professor Paul Kelly
Interim Summer School
Academic Director,
Department of Government

Professor Kelly is the Interim Academic Director of LSE Summer School. He has an MA from the University of York and a PhD from the University of London, and held positions at the University of Chicago Law School and University College London before joining LSE. His research interests are in British political theory, Liberal political philosophy, multiculturalism, group rights and national identity and theories of social justice. Professor Kelly teaches IR130: Athens to Al-Qaeda: Political Theory and International Politics.

"LSE Summer School offers a broad set of courses across a variety of different disciplines, taught by leading scholars in their fields."

Professor Paul Kelly



Accounting

● ○ ○

100 LEVEL

AC101: Managerial Accounting and Financial Control

AC110: Principles of Accounting

● ● ○

200 LEVEL

AC201: Performance Measurement for Decision-Making

AC210: Corporate Financial Reporting and Communication

AC215: Business Analysis and Valuation



Business and Management

● ○ ○

100 LEVEL

MG101: Marketing

MG103: Consumer Behaviour: *Behavioural Fundamentals for Marketing and Management*

MG105: Social Innovation and Entrepreneurship

MG106: Strategic Management

MG110: The Science and Art of Decision Making

MG130: Organisational Behaviour

MG133: Foundations of Management

MG190: Human Resource Management and Employment Relations

● ● ○

200 LEVEL

MG202: Open Innovation

MG203: Strategic Management of Markets and Growth: *Industrial Policy in Europe*

MG204: Leadership in Organisations

MG205: Competitive Strategy and Game Theory

MG206: Business Strategy in International and Emerging Markets

MG209: Bargaining and Negotiation: *Interests, Information, Strategy and Power*

MG220: Corporate and Organisational Strategy

MG250: Management and Economics of E-Business

● ● ●

300 LEVEL

MG300: Negotiation Boot Camp: *Personal Mastery in the Art of Negotiating*



Faculty Spotlight



Dr Heather Kappes Department of Management

MG103: Consumer Behaviour: Behavioural Fundamentals for Marketing and Management

Dr. Kappes takes a behavioural science approach to marketing, trying to understand what influences people as they pursue their goals. Her current research looks at how adults and children think about wealth and spending, and how their beliefs predict their spending and financial resilience. She teaches marketing and consumer behaviour courses to undergraduates and masters students, and has experience teaching executives as well.



Economics



100 LEVEL

- EC101:** Introductory Microeconomics
- EC102:** Introductory Macroeconomics
- EC104:** The Wealth (and Poverty) of Nations: *Historical Economic Divergence across the Globe*



200 LEVEL

- EC200:** Introduction to Behavioural Economics
- EC201:** Intermediate Microeconomics
- EC202:** Intermediate Macroeconomics
- EC203 :** Real Estate Economics and Finance
- EC204:** Financial Markets and the Global Economy: *the History of Bubbles, Crashes and Inflation*s
- EC212:** Introduction to Econometrics
- EC235:** Economics of European Integration
- EC240:** Environmental Economics & Sustainable Development
- EC260:** The Political Economy of Public Policy
- EC270:** Public Finance



300 LEVEL

- EC307:** Development Economics
- EC312:** Advanced Econometrics
- EC320:** Applied Econometrics and Big Data
- EC321:** Money and Banking
- EC341:** Industrial Organisation & Introduction to Competition Policy
- EC351:** International Economics



Finance



200 LEVEL

- FM202:** Analysis and Management of Financial Risk
- FM225:** Fixed Income Securities, Debt Markets and the Macro Economy
- FM230:** Alternative Investments
- FM250:** Finance
- FM255:** Financial Markets



300 LEVEL

- FM350:** Advanced Corporate Finance
- FM360:** Options, Futures and Other Financial Derivatives



Faculty Spotlight



Dr Francesco Nava Department of Economics

EC201: Intermediate Microeconomics

A graduate of Milan's Università Bocconi; Dr Nava went on to complete both his MA and PhD in Economics at the University of Chicago. Dr Nava has been with the Department of Economics for seven years, and specialises in Economic Theory, Industrial Organisation and Computational Economics. Dr Nava recently won the LSE Education Excellence Award.

Go to lse.ac.uk/summerschool for up-to-date course listings, full outlines and fees

Courses may be subject to change without notice.



International Relations, Government and Society



100 LEVEL

- IR100:** Great Thinkers and Pivotal Leaders: *Shaping the Global Order*
- IR101:** Childhood across Cultures
- IR102:** Capitalism, Democracy and Equality: *The Political Economy of the Advanced Nations*
- IR104:** Governing Climate and Environmental Change: *Science, Policy and Politics*
- IR105:** Understanding Foreign Policy: *the Diplomacy of War, Profit and Justice*
- IR106:** From Sarajevo to Baghdad: *Key Decisions on War and Peace, 1914-2003*
- IR110:** Foundations of Psychological Science
- IR115:** Culture and Globalisation
- IR120:** Trade, Development and the Environment
- IR130:** Athens to Al-Qaeda: *Political Theory and International Politics*
- IR140:** Global Communications, Citizens and Cultural Politics
- IR160:** The Middle East in Global Politics



200 LEVEL

- IR200:** International Organisation: *The Institutions of Global Governance*
- IR201:** Power Shift: *The Decline of the West, The Rise of the BRICS and World Order in a New Asian Century*
- IR202:** Genocide: History, Theory, Prevention
- IR203:** An Urbanising World: *The Future of Global Cities*
- IR204:** International Migration, Social Integration and Public Policy
- IR205:** Islam and Politics
- IR206:** Revolutions and World Politics
- IR207:** Development in the International Political Economy
- IR209:** International Political Economy
- IR210:** International Politics: *Building Democracies from Conflict*
- IR211:** America as a Global Power: *FDR to Trump*
- IR214:** Public Policy Analysis
- IR215:** The Politics of Humanitarian Interventions
- IR245:** International Journalism and Society - *The Role of the Media in the Modern World*
- IR250:** The Global Politics of Protest and Change
- IR270:** What Kind of Europe? *Crisis, Reform and the International Role of the European Union*



Faculty Spotlight



Dr Robert Falkner Department of International Relations

IR120: Trade, Development and the Environment

An Associate Professor of International Relations whose expertise lies in global political economy, global environmental politics, and the role of business in international relations. He gained his doctorate in International Relations from the University of Oxford's Nuffield College. Amongst other senior appointments, Dr Falkner serves as the Academic Director of the TRIUM Global Executive MBA, an alliance between LSE, NYU Stern School of Business and HEC Paris, and one of the world's leading global EMBA's.

Law



100 LEVEL

- LL101:** Introduction to English Law
- LL102:** Introduction to International Human Rights: *Theory, Law and Practice*
- LL105:** International Law: *Contemporary Issues*
- LL110:** Tax, Justice and Society
- LL135:** Introduction to Corporate Law and Governance



300 LEVEL

- LL301:** Corporate Finance Law



200 LEVEL

- LL200:** Competition Law and Policy: *Controlling Private Power*
- LL202:** Commercial Law
- LL203:** International Commercial Litigation and Arbitration
- LL204:** Cyberlaw
- LL205:** European Union Law and Politics
- LL206:** International Financial Law
- LL207:** International Financial Regulation
- LL208:** Freedom of Speech, Media and the Law
- LL209:** Comparative Human Rights
- LL210:** Tax Avoidance
- LL211:** The International Law of War Crimes

Go to lse.ac.uk/summerschool for up-to-date course listings, full outlines and fees

Courses may be subject to change without notice.



Research Methods, Data Science, and Mathematics



100 LEVEL

ME100: Introduction to Calculus

ME116: Essential Statistics for Economics and Econometrics

ME117: Further Statistics for Economics and Econometrics



200 LEVEL

ME200: Computational Methods in Financial Mathematics

ME201: Optimization with Applications in Portfolio Choice



300 LEVEL

ME301: Survey Research Methods: *From Design to Analysis*

ME302: Introduction to Financial Mathematics

ME303: Statistical Methods for Multivariate Data in Social Science Research

ME305: Qualitative Research Methods

ME306: Real Analysis

ME314: Introduction to Data Science and Big Data Analytics

ME315: Machine Learning in Practice

ME317: Statistical Methods in Risk Management



Programme Director



Professor Ken Benoit Department of Methodology

Professor Benoit holds a PhD in Government with a specialisation in statistical methodology from Harvard University. He is currently Professor of Quantitative Social Research Methods in the Department of Methodology, where he teaches data science and computational methods. He was also the founding Director of the Social and Economic Data Science (SEDS) Research Unit at LSE. Professor Benoit teaches ME314: Introduction to Data Science and Machine Learning.

Application and fees

When and how should I apply?

Applications typically open in late November. Popular courses and LSE residences do fill up quickly, so we urge you to apply as soon as you are able.

How do I support my application?

You will be asked to provide a copy of your university transcript (if available). If English is not your first language you should include appropriate evidence of English proficiency (see page 24).

How much does it cost?

Please see www.lse.ac.uk/summerschool for tuition fee details



More information online

www.lse.ac.uk/summerschool

Or contact us at:

Tel: +44 (0)20 7955 7227
summer.school@lse.ac.uk
@LSESummerSchool

For course details and fees visit:

lse.ac.uk/summerschool and join our mailing list for updates.

Cancellation of courses

Occasionally it is necessary to cancel or postpone courses. Should a course be subject to a major change, applicants will be offered the option to either transfer to another course or receive a full refund. Any alterations to the programme will be made by the first week of June 2020. If you are coming from abroad, you are strongly advised to take out comprehensive travel insurance for the duration of your stay.

Equality and diversity

To uphold the School's commitment to equality of respect and opportunity, as set out in the Ethics Code (search 'Ethics Code' on the LSE homepage), we will treat all people with dignity and respect, and ensure that no-one will be treated less favourably because of their role at the School, age, disability, gender (including gender identity), race, religion or belief sexual orientation, marriage and civil partnership, pregnancy and maternity and social and economic background. For details of the School's work on enhancing its equality practices to reflect the requirements of the Equality Act 2010, please see the EDI website (search 'EDI Policy Statement on the LSE homepage').

“The LSE professors are focused on teaching knowledge and skills that will stay with you for life. You don’t find professors like that at every summer school.”

Bruno Monteiro Filho

Inspier Institution, Sao Paulo, Brazil

EC320: Applied Econometrics and Big Data





***“The LSE experience
provides a unique mix of
rigorous academics and
all the vim and vigour of
central London.”***

Professor Paul Kelly
Interim Summer School
Academic Director,
Department of Government



More information online
www.lse.ac.uk/summerschool

Or contact us at:
Tel: +44 (0)20 7955 7227
summer.school@lse.ac.uk
[@LSESummerSchool](https://twitter.com/LSESummerSchool)